

SUN CITY CENTER, UNIT 52

SECTIONS 12 & 13, TOWNSHIP 32 SOUTH, RANGE 19 EAST
HILLSBOROUGH COUNTY, FLORIDA

FAIRFIELD "A" CONDOMINIUM
CB. 2, Pg. 30

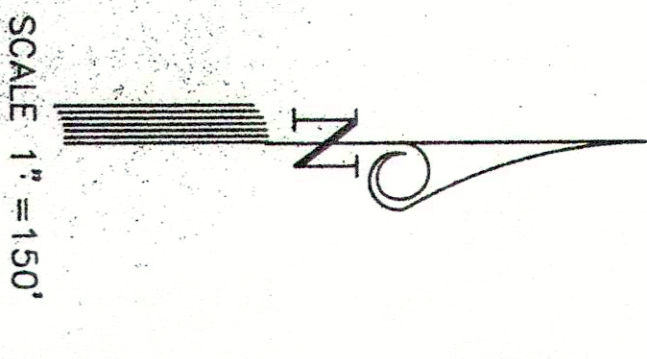
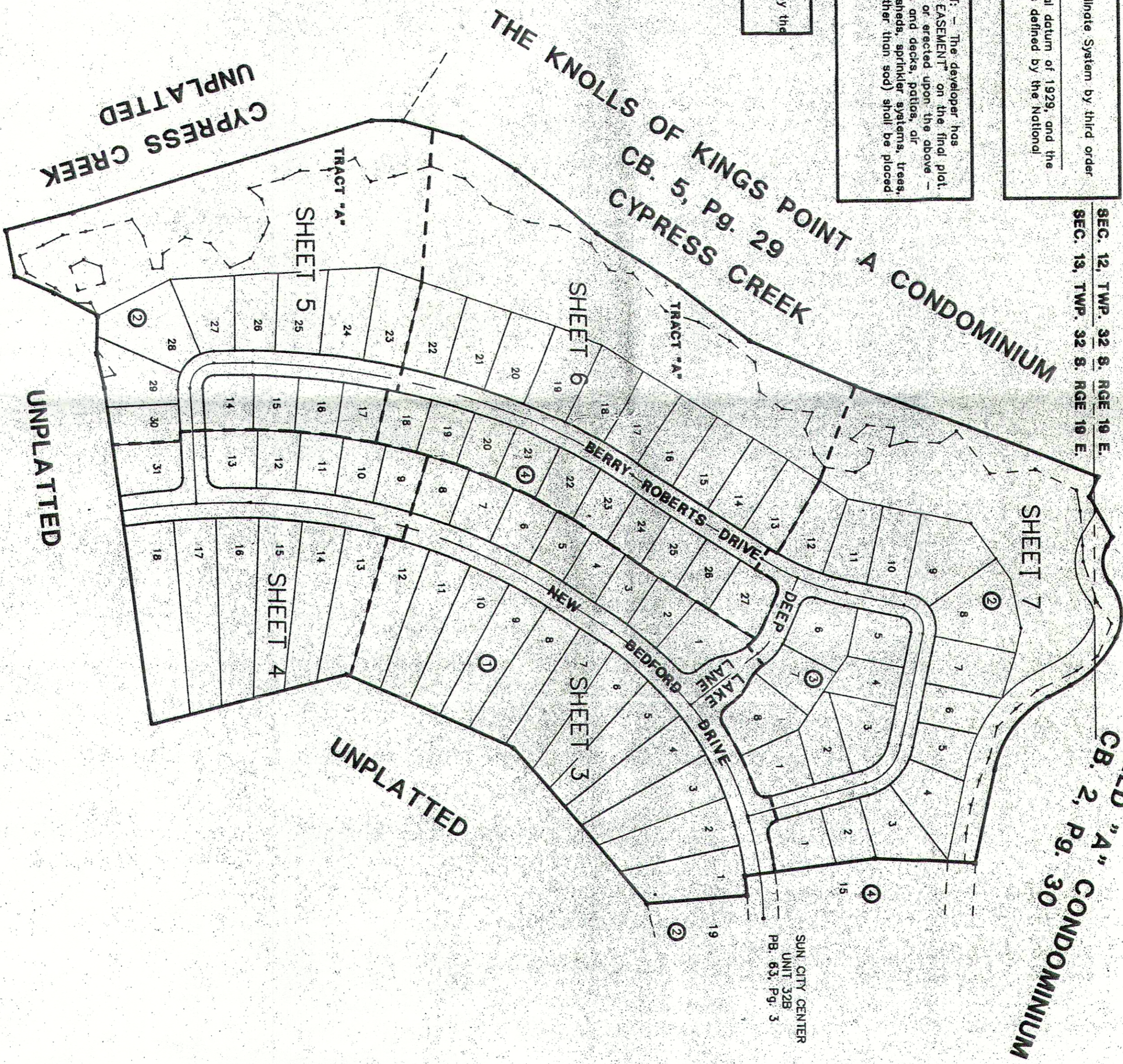
SEC. 12, TWP. 32 S, RGE 19 E
SEC. 13, TWP. 32 S, RGE 19 E

NOTE:
 1. X - Y Coordinates shown are tied to the Florida Coordinate System by third order accuracy and are supplemental data only. N/A
 Originating coordinates: N/A
 2. Elevations shown are based on National Geodetic vertical datum of 1929, and the elevations of the P.M.'s are to third order accuracy as defined by the National Oceanic and Atmospheric Administration.

SUBDIVISION DISCLOSURE STATEMENT, DRAINAGE EASEMENT: - The developer has designated certain areas of the subdivision as "DRAINAGE EASEMENT" on the final plat. No permanent improvements or structures shall be placed or erected upon the above-referenced property. In addition, no fences, driveways, pools and decks, patios, air conditioners, any impermanent surface improvements, utility sheds, sprinkler systems, trees, shrubs, hedges, plants, or any other landscaping elements (other than sod) shall be placed or erected upon the above-described property.
 (To be noted on every deed)

NOTE:
 Parcel "B" is private property and is to be maintained by the lot owners. Parcel "B" is dedicated to the lot owners. Each lot owner has an undivided interest in this parcel.

NOTE:
 TRACT "A" is to be owned and maintained by the lot owners.



SCALE 1" = 150'
 SCALE IN FEET

KEY MAP

- LEGEND:
- 1. Symbol indicates (P.R.M.) Permanent Reference Monuments
 - 2. Symbol indicates (P.C.P.) Permanent Control Points
 - 3. Bearing based on Assumed data
 - 4. (R) Indicates radial line
 - 5. (NR) Indicates non-radial line
 - 6. E.P.U.E. = Electric Power Utility Easement
 - 7. W.J.L. = Wetland Jurisdictional Line