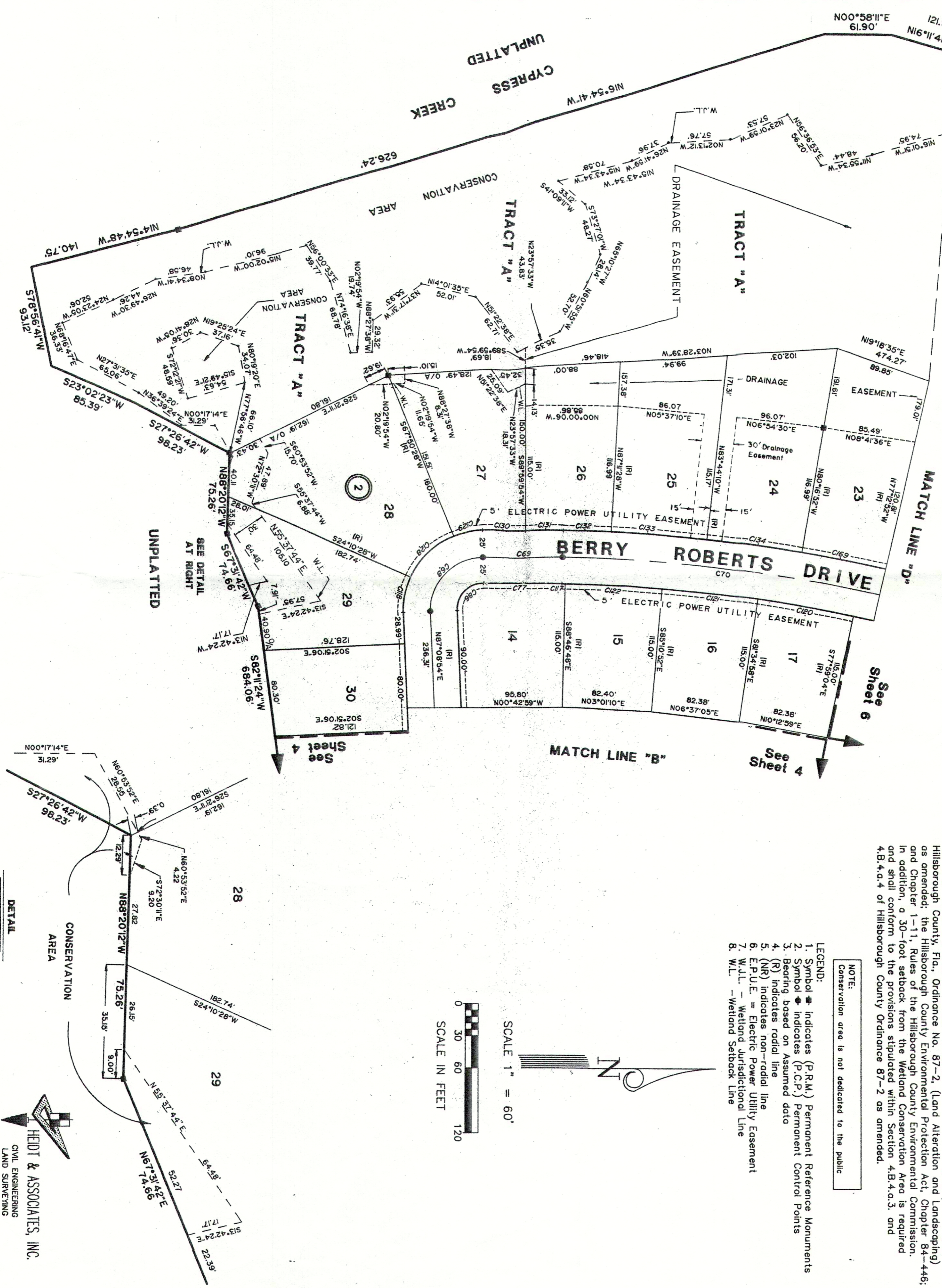


# SUN CITY CENTER UNIT 52

SECTION 12 & 13, TOWNSHIP 32 SOUTH, RANGE 19 EAST  
 HILLSBOROUGH COUNTY, FLORIDA

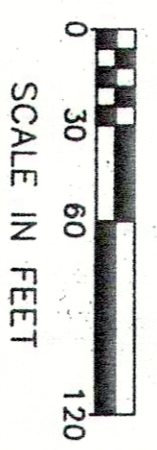


**WETLAND CONSERVATION AREA NOTE:**  
 The Wetland Conservation Area shall be retained in a natural state pursuant to Hillsborough County, Fla., Ordinance No. 87-2, (Land Alteration and Landscaping) as amended; the Hillsborough County Environmental Protection Act, Chapter 84-446; and Chapter 1-11, Rules of the Hillsborough County Environmental Commission. In addition, a 30-foot setback from the Wetland Conservation Area is required and shall conform to the provisions stipulated within Section 4.B.4.a.3. and 4.B.4.a.4 of Hillsborough County Ordinance 87-2 as amended.

**NOTE:**  
 Conservation area is not dedicated to the public.

- LEGEND:**
- 1. Symbol  $\blacklozenge$  indicates (P.R.M.) Permanent Reference Monuments
  - 2. Symbol  $\blacklozenge$  indicates (P.C.P.) Permanent Control Points
  - 3. Bearing based on Assumed data
  - 4. (R) indicates radial line
  - 5. (NR) indicates non-radial line
  - 6. E.P.U.E. = Electric Power Utility Easement
  - 7. W.J.L. = Wetland Jurisdictional Line
  - 8. W.L. = Wetland Setback Line

SCALE 1" = 60'



DETAIL (NTS)  
 HEDT & ASSOCIATES, INC.  
 CIVIL ENGINEERING  
 LAND SURVEYING  
 SHEET 5 OF 8 SHEETS