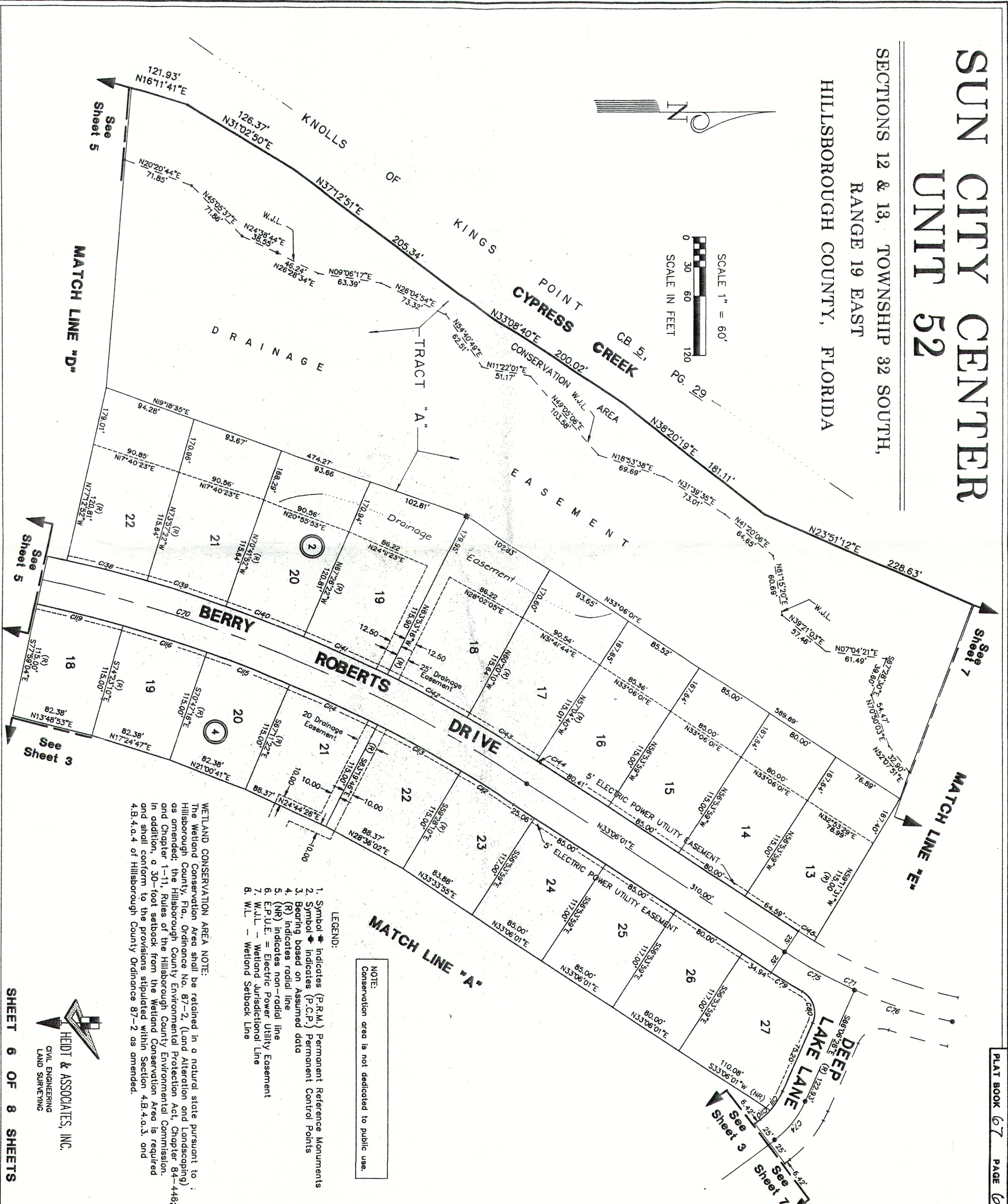
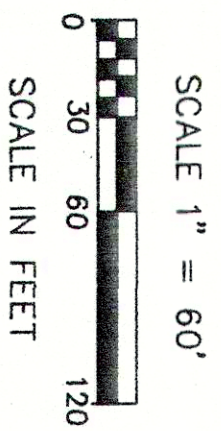
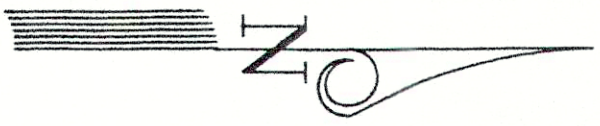


SUN CITY CENTER UNIT 52

SECTIONS 12 & 13, TOWNSHIP 32 SOUTH,
RANGE 19 EAST
HILLSBOROUGH COUNTY, FLORIDA



- LEGEND:**
1. Symbol \blacklozenge indicates (P.R.M.) Permanent Reference Monuments
 2. Symbol \blacklozenge indicates (P.C.P.) Permanent Control Points
 3. Bearing based on Assumed data
 4. (R) indicates radial line
 5. (NR) indicates non-radial line
 6. E.P.U.E. = Electric Power Utility Easement
 7. W.J.L. = Wetland Jurisdictional Line
 8. W.L. = Wetland Setback Line

NOTE:
Conservation area is not dedicated to public use.

WETLAND CONSERVATION AREA NOTE:
The Wetland Conservation Area shall be retained in a natural state pursuant to Hillsborough County, Fla. Ordinance No. 87-2, (Land Alteration and Landscaping) as amended; the Hillsborough County Environmental Protection Act, Chapter 84-446; and Chapter 1-11, Rules of the Hillsborough County Environmental Commission. In addition, a 30-foot setback from the Wetland Conservation Area is required and shall conform to the provisions stipulated within Section 4.B.4.a.3. and 4.B.4.a.4 of Hillsborough County Ordinance 87-2 as amended.

